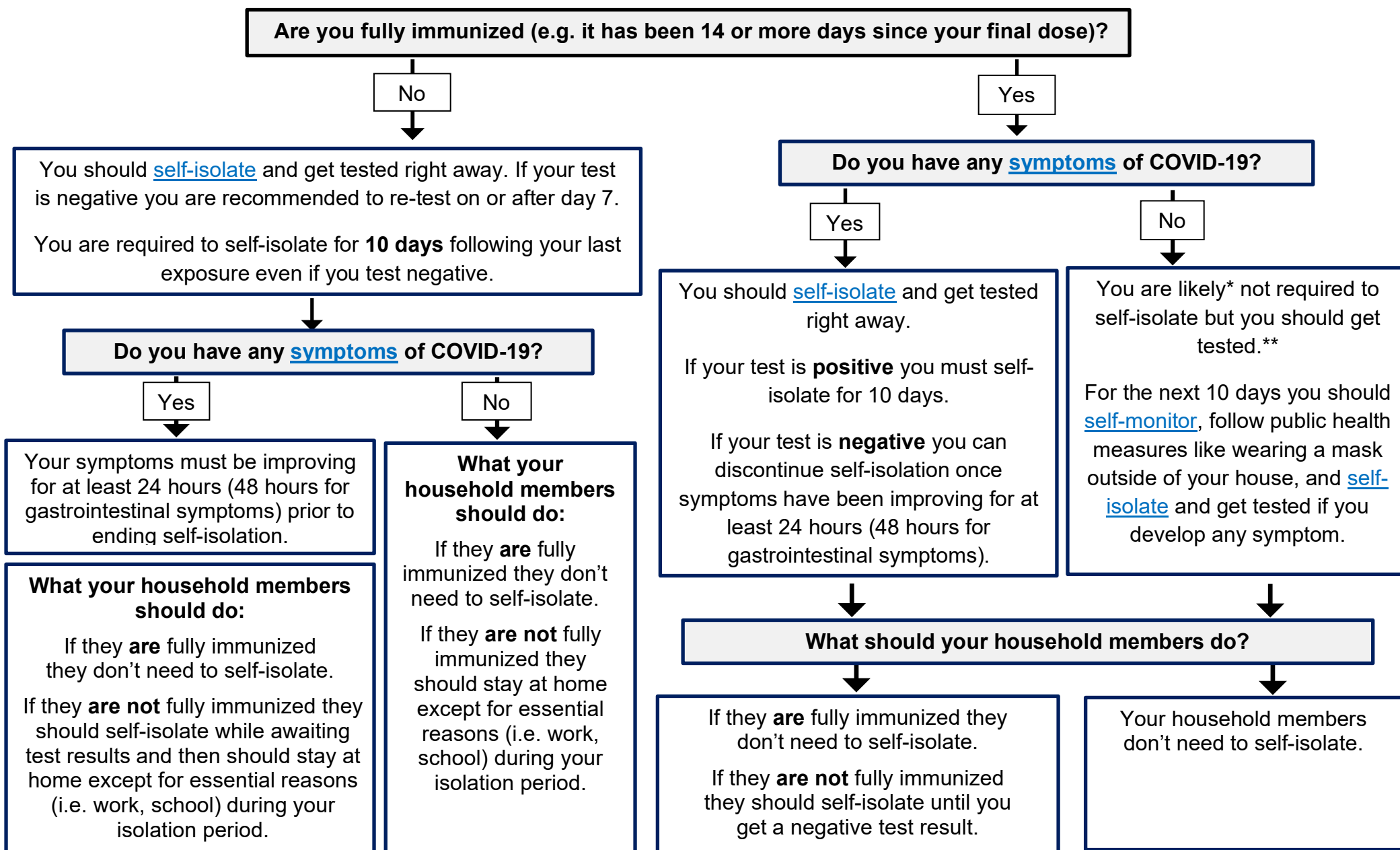


## You've been exposed to someone who has tested positive for COVID-19, now what?



**Your local public health unit will contact you shortly with more instructions.**

\*Self-isolation still may be required at the discretion of the local public health unit. Refer to the [COVID-19 Fully Immunized and Previously Positive Individuals: Case, Contact and Outbreak Management Interim Guidance](#) for individuals with immunocompromise and residents of high risk congregate living settings / inpatients. \*\*Refer to [Provincial Testing Guidance](#).